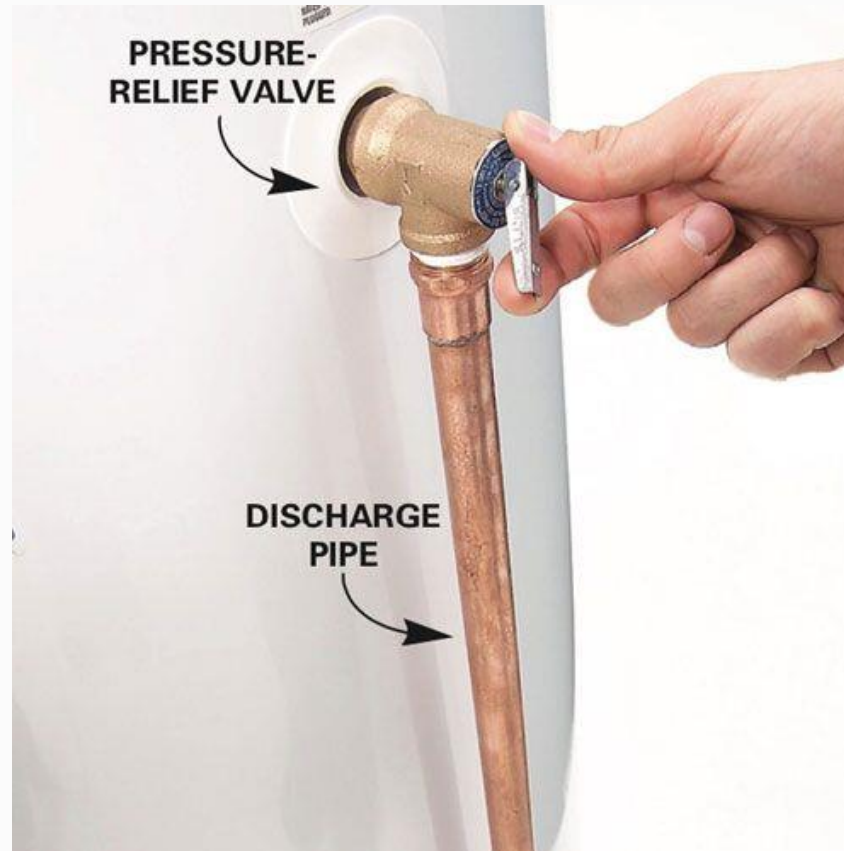


Help to Find Water Leaks in Residence

How to Find a Water Leak in Hot Water Tanks

The valves for these tanks “usually connected to a floor drain” may be leaking without your knowledge. If the drainpipe cannot be removed, try listening for a hissing sound that indicates a leak. If the discharge pipe is leaking at the bottom, this could also indicate a bad valve.



The water tank (or water heater) drainpipe is also called a discharge pipe. The valve is located at the top of the pipe. The pipe extends down to the floor and drains into a catch basin or a drain in the floor.

How to Find a Water Leak in Toilets

Here's what to do to find a leak in your toilet:

- **Remove the lid from the toilet's water tank.**
- **Listen for any sounds of water draining or for hissing noises. Try to determine the exact location where you hear a hissing noise.**
- **If you don't hear any leaking noises, add a few drops of food coloring to the tank.**
- **Wait 10 minutes, then check to see if the toilet bowl water has changed color. If so, a leak in the flapper is your culprit.**



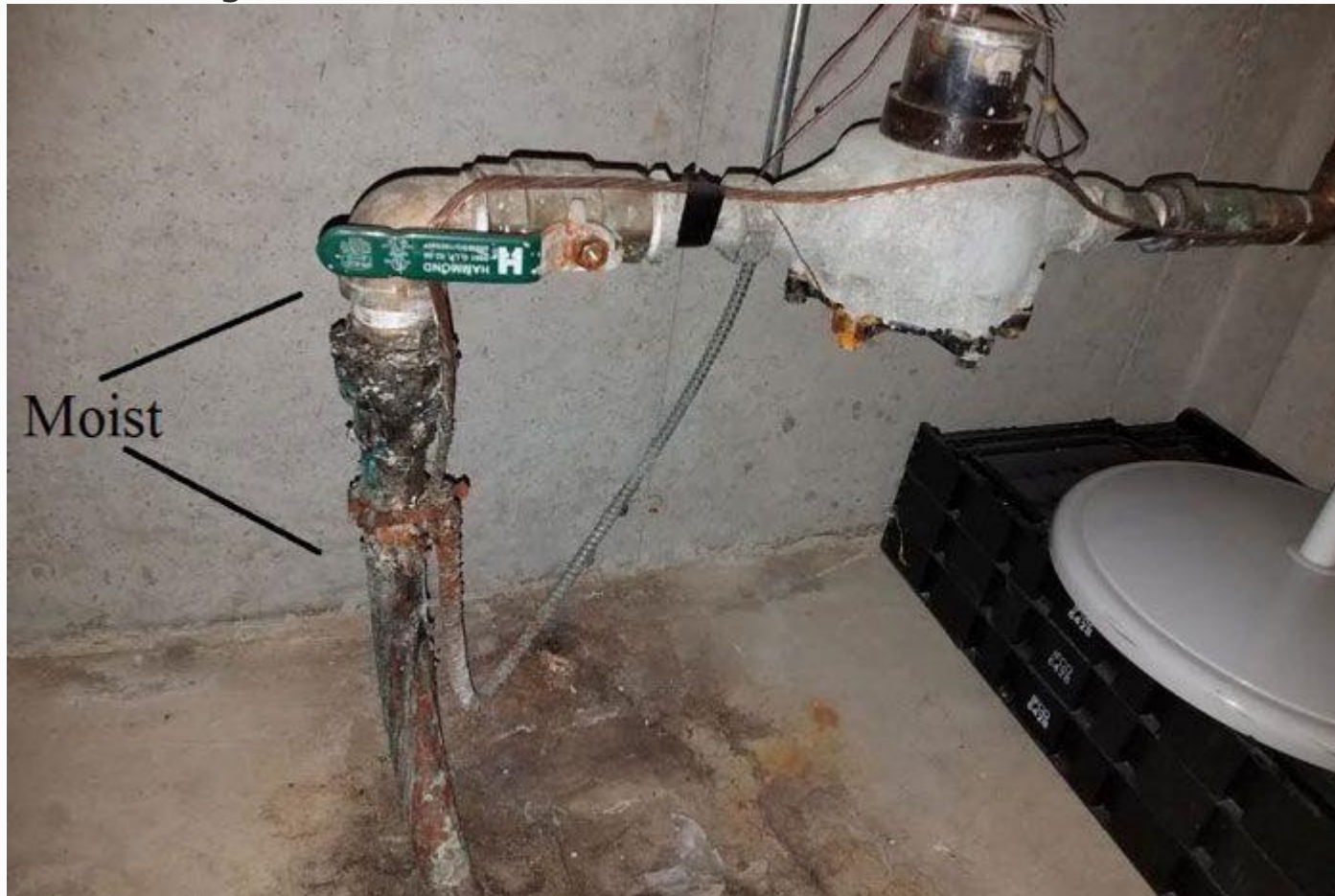
To begin, open the lid to your toilet's water tank.

How to Find a Water Leak in Your Meter Line

After the toilets have been ruled out for leaks, look at the meter line running to the house. Locating the leak for the plumber will save plenty of money, so this is an important step. Here's what you do:

- **Turn the shutoff valve to the off position and make sure no one is trying to use any water in the home.**

- Go to the water meter and remove the lid.
- When it is located, look to see if the meter is turning. A turning meter indicates a leak somewhere between the meter and the house.
- Look for greener grass, muddier areas, or soft spots in the yard that may indicate a leak. You can report this to the plumber.
- If the meter is not moving, the leak is somewhere in the house.



This is a typical water meter located in a residential basement. Although difficult to see here, the pipe to the left, located below the meter shut-off valve (the green lever) is moist and shows indications of a leak.

How to Find a Water Leak Outside

Often, a water leak located outside your home is from your water faucet (also referred to as a spigot or hose bib). It's the faucet, usually located on an outside wall, that you attach your hose to. Go to each outdoor water faucet and follow these instructions:

- **Put a metal screwdriver on the metal part of each hose bib connected to the house.**
- **Place the thumb knuckle over the top of the screwdriver.**
- **Touch the area just in front of the ear to the thumb knuckle. This creates an effect like a stethoscope.**
- **If you hear anything, remember what they sound like. When noise is louder in one spigot than the other, this means the leak is closer to the spigot where the noise is more audible.**

PRO TIP: If hose bibs are quiet, apply this tip to indoor faucets, but proceed with caution due to the risk of burns from hot water heaters.

Disclaimer: Exercise extreme caution when testing faucets connected to a hot water heater, as hot water can cause severe burns or scalding; always implement proper safety precautions before proceeding.



Example of an outdoor water faucet (or spigot or hose bib).

Additional Sources of Water Leaks

Check all the taps, irrigation systems, hoses, and sprinklers on your property. Check the shower heads for any leaks. This is a step that many people overlook, and repairing a shower head is a simple DIY task. People who have a swimming pool or hot tub should check those for leaks as well.



Don't forget to check showerheads, taps, irrigation systems, sprinklers, pools, and hot tubs for leaks too.